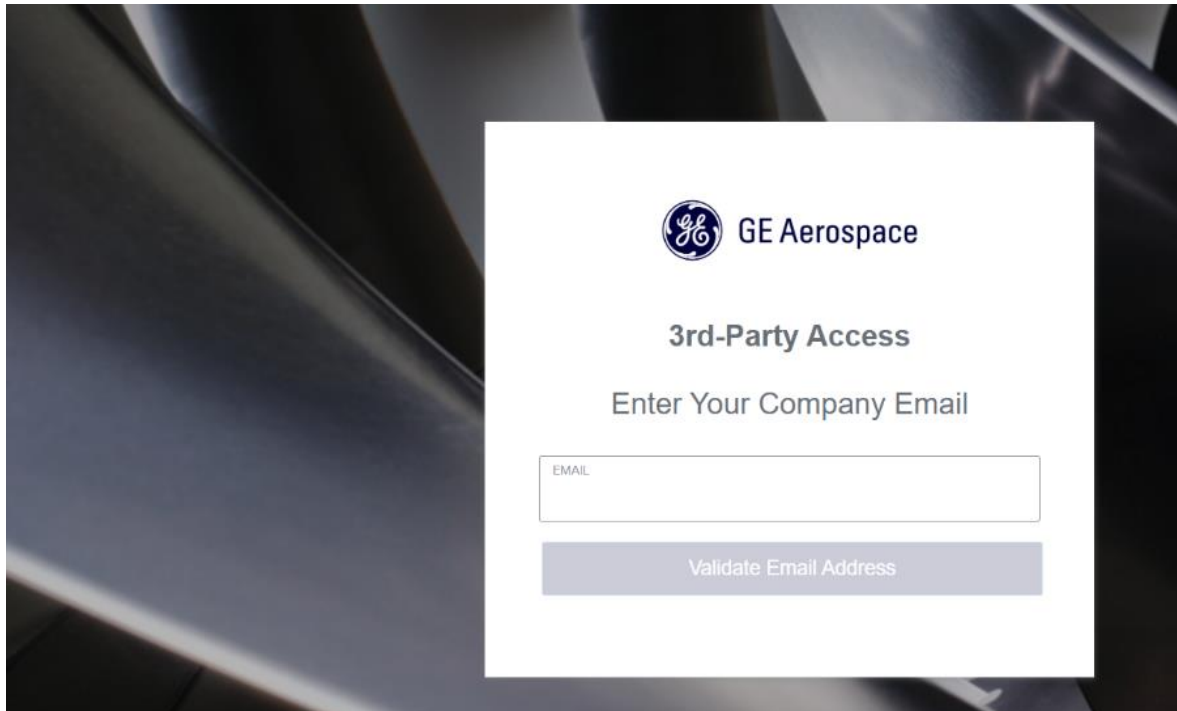


## **GE Aerospace B2B Account Self-registration – User guide**

**Please follow the steps below for new B2B user account registration –**

1. Kindly proceed by clicking on below link which will redirect to GE Aerospace “Enter your Email to Start With” Page.

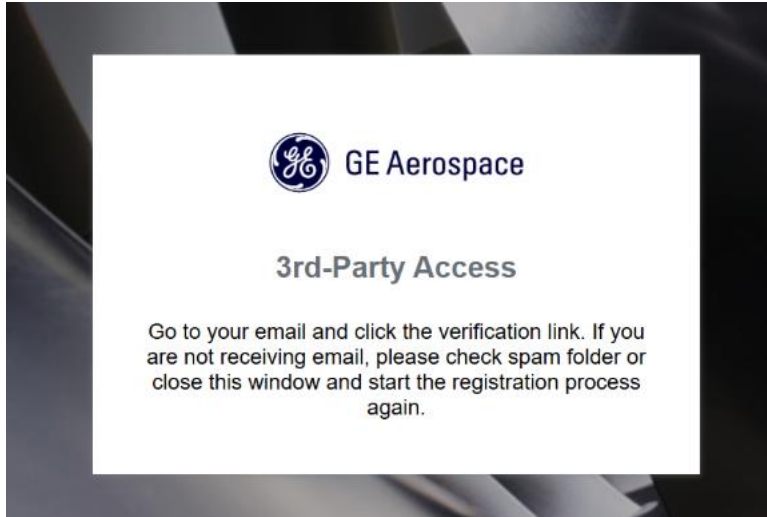
[GE Aerospace B2B User Registration](#)



The screenshot displays a white registration form centered on a dark background of aircraft engine components. At the top of the form is the GE Aerospace logo, consisting of the GE monogram in a circle followed by the text 'GE Aerospace'. Below the logo, the text '3rd-Party Access' is displayed in a bold font, followed by 'Enter Your Company Email' in a standard font. A text input field with the placeholder 'EMAIL' is positioned below the text. At the bottom of the form is a grey button with the text 'Validate Email Address'.

2. Enter Company Email address which received the self-registration instructions (please ONLY use the email address that we have addressed this email to) in EMAIL field and click on "Validate Email Address". Below screen is displayed. Now go to your email Inbox and click on Verification link. Below screen is displayed, Now Go to your email Inbox and click on Verification link.

**NOTE: The link is valid only for 10 mins**



### Email template:

#### Verify your Email For GE Aerospace



noreply.b2bidgeaerostg@geaerospace.com  
To Parveen, Nihaz (GE Aerospace, consultant)



Click here to download pictures. To help protect your privacy, Outlook prevented automatic download of some pictures in this message.

You don't often get email from [noreply.b2bidgeaerostg@geaerospace.com](mailto:noreply.b2bidgeaerostg@geaerospace.com). [Learn why this is important](#)



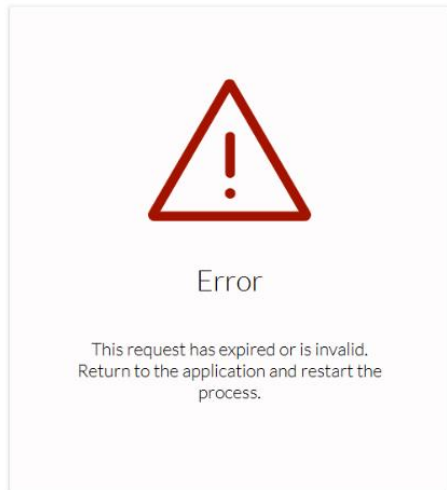
Hello [Nihaz.Parveen@geaerospace.com](mailto:Nihaz.Parveen@geaerospace.com),

To proceed with the GE Aerospace B2B user registration process, please verify your email address by clicking [this link](#) or copying and pasting this URL into your browser.

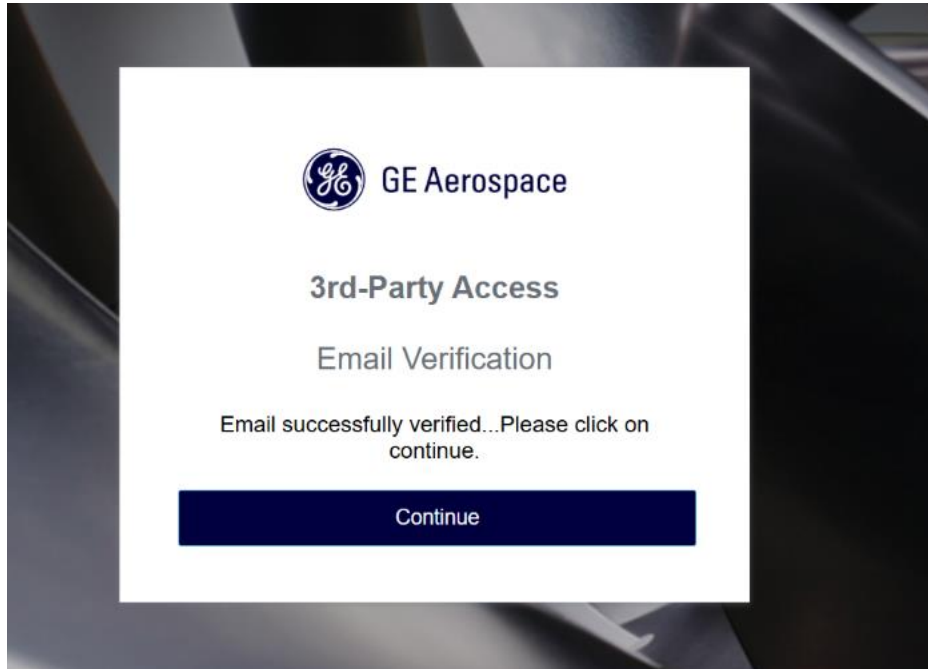
The link will expire after 10 minutes.

Thank You,  
**GE Aerospace IdM Team**

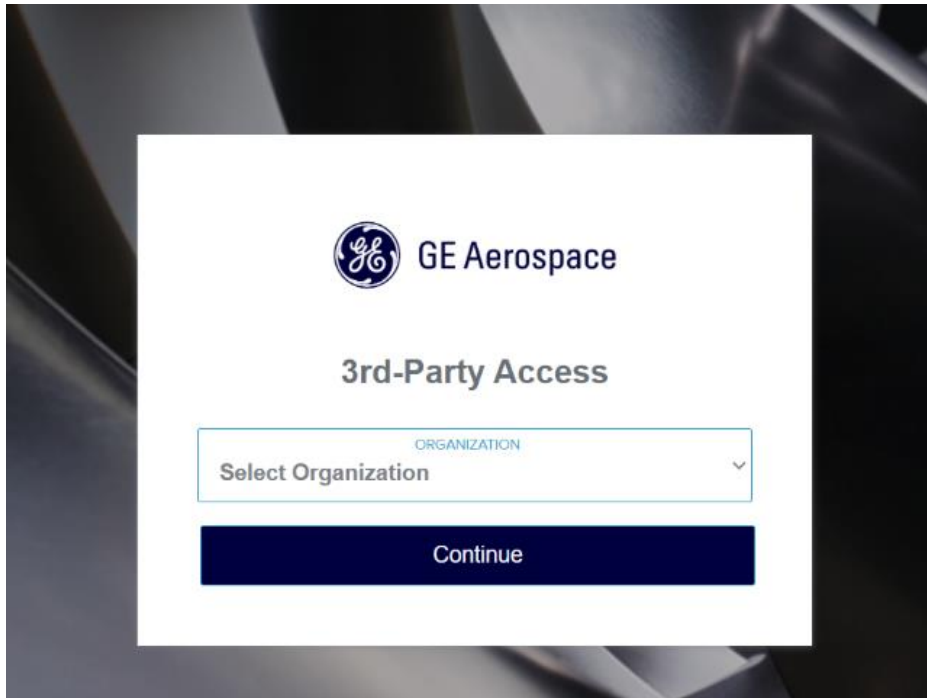
**Note:** If the below error occurs after clicking the verification link, it is due to email filtering enabled at the Organization level. Work with the appropriate team of your company to whitelist "auth.pingone.com" or Sender address "[noreply-B2BIdentity@geaerospace.com](mailto:noreply-B2BIdentity@geaerospace.com)"



3. Once the link is clicked from email it redirects to below "Email Verification successful" page. Click on **Continue** button to proceed further.

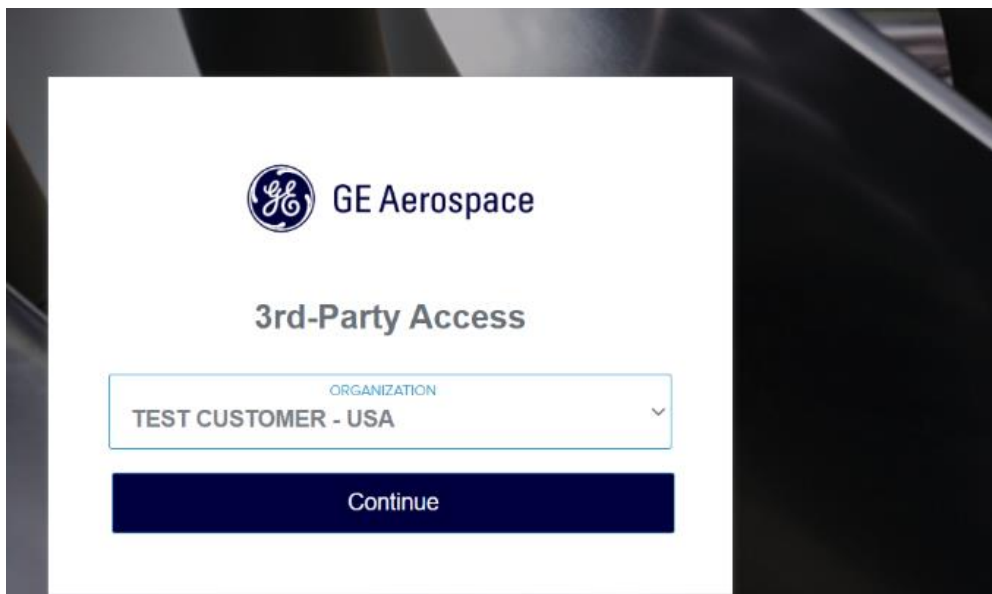


4. On Clicking Continue button it redirects to below Organization Select Screen

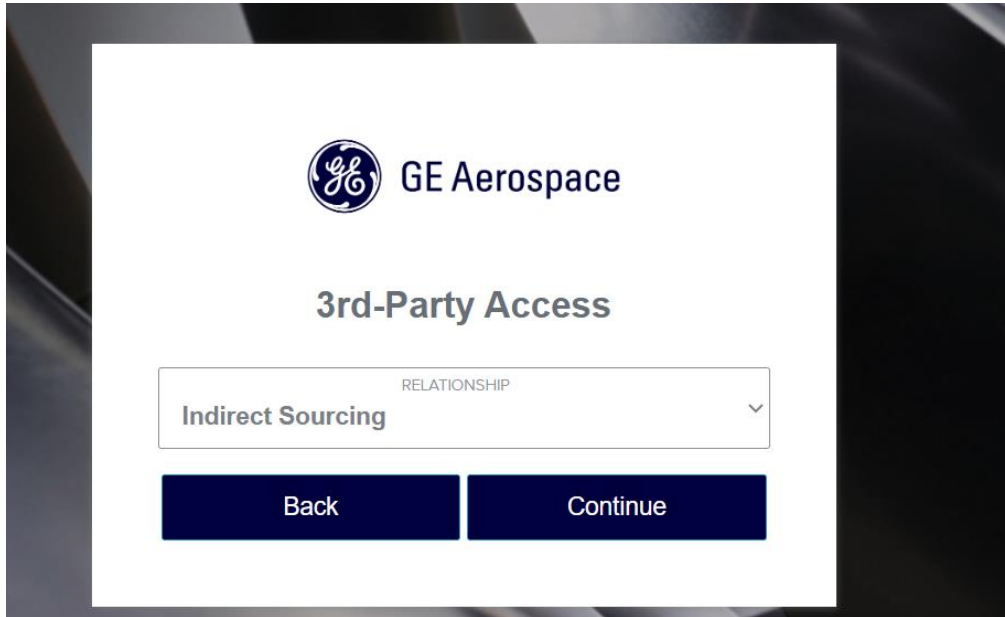


5. Select your organization name from the list of Organizations available in dropdown and click on **Continue**.

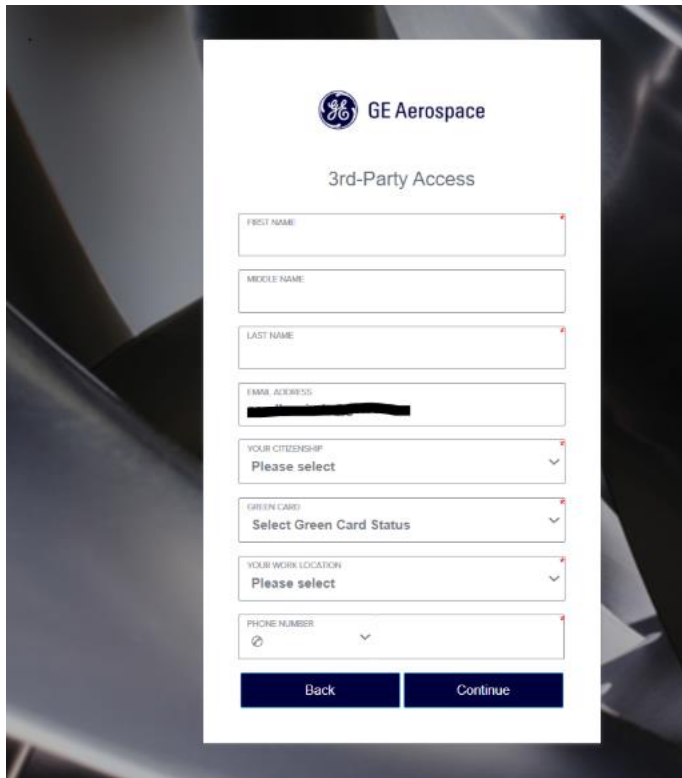
**Note:** Company name will be appended with country of the company



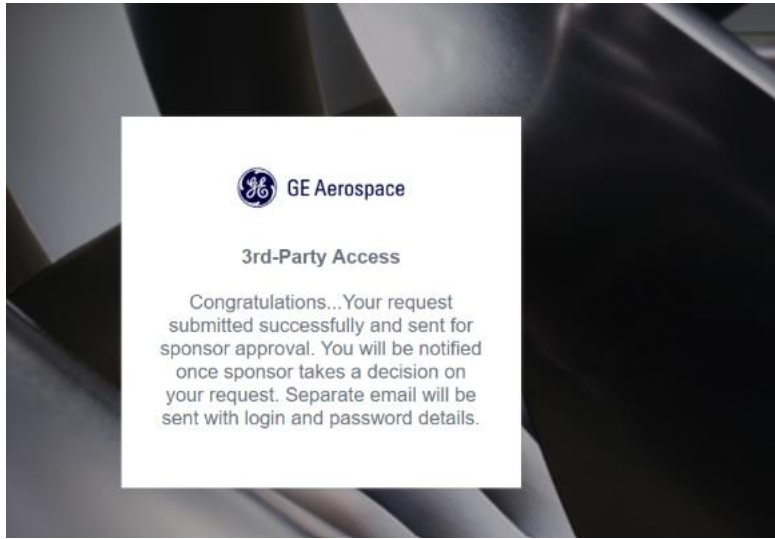
6. Based on the Organization selected, the next page displays Relationships. Select **Indirect Sourcing** as the relationship and click on **Continue**.



7. It takes you to the **User Registration** form. Please enter all the mandatory details and click on **Continue**.



8. User Registration request is now submitted and sent for Sponsor approval.



**Next step:** You will receive an e-mail with a welcome kit which will contain the instructions to reset your password, and log in to the ISP portal.